

P L A C E R



S P C A

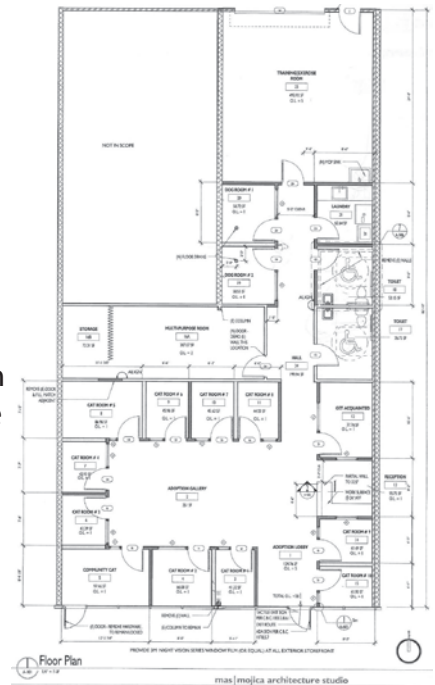
Society for the Prevention of Cruelty to Animals

2010 Annual Report





A lease was secured and modifications began in preparation for the **Pet Adoption and Resource Center in Auburn, operated by Placer SPCA**. The new center will open in early 2011 and provide enhanced services to the residents of the foothills of Placer County.



Through 2010, **31,366** animals were adopted into forever homes since 1995.

2,273 animals were adopted in 2010.

911 animals were cared for in volunteer foster homes until they were ready for adoption.

1,562 animals received medical care through the Guardian Angel program.

3,057 vouchers were issued to residents of Placer County for subsidized spay and neuter services through SNAP (Spay and Neuter Assistance Program), a 44.5% increase from 2009.

49 Placer County pet owners received emergency financial assistance through the SOS Program for veterinary care, rental deposits, and boarding costs.



551 volunteers contributed **85,779** hours, including work done at the Placer SPCA Companion Animal Care Center, at the Thrift Store, through the Spay and Neuter Assistance Program, fostering animals, and by helping with special events.

Charity Navigator has awarded Placer SPCA a four star rating for four consecutive years.

Only 8% of all nonprofits evaluated nationwide receive this "exceptional" rating four years in a row.



2010 Corporate Partners

Silver Partner
SureWest Foundation

Bronze Partners
Mann, Urrutia & Nelson, CPAs
Westlake, Grahl & Glover
Al Johnson Consulting, LLC
The Buzz Oates Group of Companies
Renasas Electronics America, Inc.

Circle of Hope Legacy Society

The Smith Family Trust/Robert T.G.
and Claudia K. Smith
Marilyn Kennedy
LeeAnn & Lonnie Dickson
Bill & Nancie Radakovitz
Patricia M. Anderson
Mary & Dave Terrell
Charlene Michelson
Jack & Gale Wright
Marlene Stoner
Jacqueline Haeling-Groff
Leilani Vierra
Colleen Watters
Colin and Karen Grahl

Members of the Circle of Hope Legacy Society have included Placer SPCA in their estate planning. *Those listed have given permission for public recognition.*

Thank you 2010 Paw Club Donors

Gold Paw Donor Club
(\$10,000+ donors)
Patricia & George Locke
Ruth M. Welch
Sally Jo Rapstad
Gene & Eve Rutkowski
The Harry Rosenberry
Foundation
Kent & Jeannette Liebman

Silver Paw Donor Club
(\$5,000+ donors)
Ayrshire Farm - Sandy Lerner
Mark & Lilly Gillam
Wells Fargo Foundation
SureWest Foundation
Janet Clark

Bronze Paw Donor Club
(\$1,000+ donors)
Mann, Urrutia & Nelson, CPAs
Renasas Electronics America, Inc.
Al Johnson Consulting, LLC
Jack & Maryann Spiegelman
The Buzz Oates Group of
Companies
Karen & Colin Grahl
Westlake, Grahl & Glover
Lynn Merrick
Jon & Gabrielle Self - In memory
of George
John & Darleen Feller

Richard Seevers & Associates
Bonnie Torres
Mary Lee Welch
Elinor Carpenter - In memory of
Sasha
Sheila Cardno, LPL Financial
The Laursen Family Fund
Simplified Design Solutions, LLC
Rhoades Family Foundation
Cindy Dean
Shari Jennings
Mary & Glenn Meyers
Ian & N'Gina Kavookjian
Sheila & William Owen
Jim & Trish Schreiber
Sharon Musso
Leroy M. Rey
Anne & Len Hauber
In Memory of Jeanette Barra-Salas
Ruth & Don Mills
Lera Rogers
Kathy Okada
Harry & Mary Weigel
Dr. Frank Lux & Karin Olson
Bobby & Kate Kennedy
Dwelle Family Foundation
Roy Hashimoto & Kelly Torikai
Thomas & Diane Albright
George & Marilyn Rose
Jo O'Donnell

The Placer SPCA Thrift Store opened on August 14. With quality items in an attractive setting, in just four and a half months of operation the Thrift Store totaled **\$97,725** in sales.



On October 2 and 3, we held the first **Barktoberfest**, with Barks, Brats & Bids on Saturday evening and the Barktoberfest family festival the following day. Attendance topped **2,300** and the event raised close to **\$45,000** for the organization.



In 2010, the Placer SPCA Humane Education Department reached **2,695** children, teaching about compassion and kindness for all living things.

2010 Board of Directors

Jeff Dutra, President

RICARDO BEVERLY HILLS, PACIFIC WEST MARKETING

Robin Trimble, President Elect

ROCKLIN CHAMBER OF COMMERCE

Robert Flautt, Past President

FOLSOM LAKE BANK

E. Howard Rudd, Treasurer

INTEGRAL FINANCIAL MANAGEMENT

Marcus Lo Duca, Secretary

LO DUCA & AVDIS, LLP

Larry Payne, Director at Large

PAYNE ASSOCIATES, LLC

Sharon Brown

BRIGHT BEGINNINGS WELCOMING SERVICE

Kent Liebman

RETIRED, INTEL CORPORATION

Edward Mojica

MAS MOJICA ARCHITECTURE STUDIO

Marilyn Festersen

MARILYN EISNER FESTERSEN INSURANCE

Gail Reinke

RETIRED, NEC ELECTRONICS AMERICA, INC.

Bill Fastiggi, DVM

SUNRISE BOULEVARD ANIMAL HOSPITAL

David Kaiser

RETIRED, INTEL CORPORATION

Curtiss Johnson

ENTERCOM RADIO (96.9 THE EAGLE)

Barbara Nelson

SUTTER ROSEVILLE MEDICAL CENTER

Chris Mann

MANN, URRUTIA & NELSON CPAS

Mark Davis

SIERRA VIEW CONSTRUCTION

John Mason

GURNEE & DANIELS LLP

Jim Gray

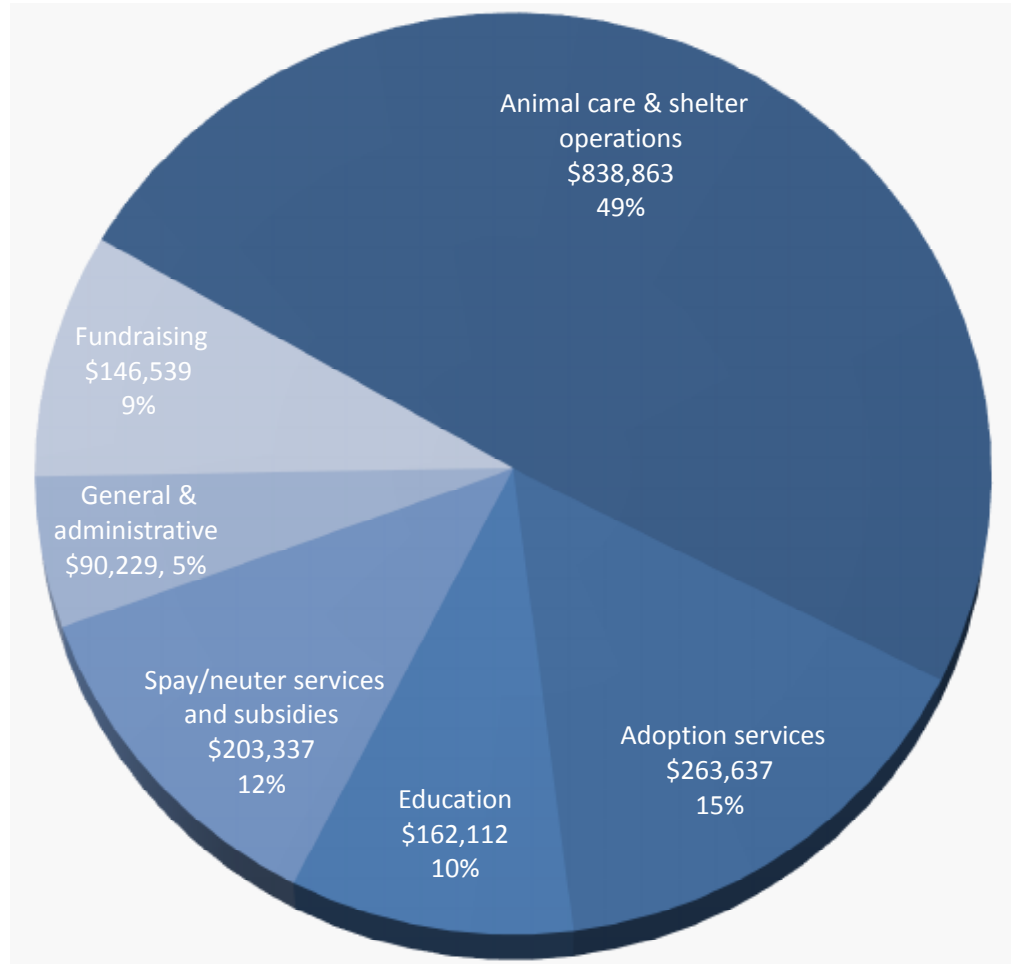
ROSEVILLE CITY COUNCIL MEMBER

Tracey Prim, Board Recorder

Leilani Vierra, Chief Executive Officer

2010 Financials

Expenses by Category



Programs and Services: 86%

Fundraising and Administration: 14%

View full 2010 Audited Financial Statements

at www.placerspca.org/report.

Placer SPCA is a private nonprofit 501(c)(3) organization, tax identification number 94-2607682, not affiliated with any other entity and does not receive donations through the ASPCA or HSUS.

Placer County's companion animal welfare experts - where your donations stay local.

150 Corporation Yard Road

Roseville, CA 95678

(916) 782-7722 • (530) 885-7387

www.placerspca.org